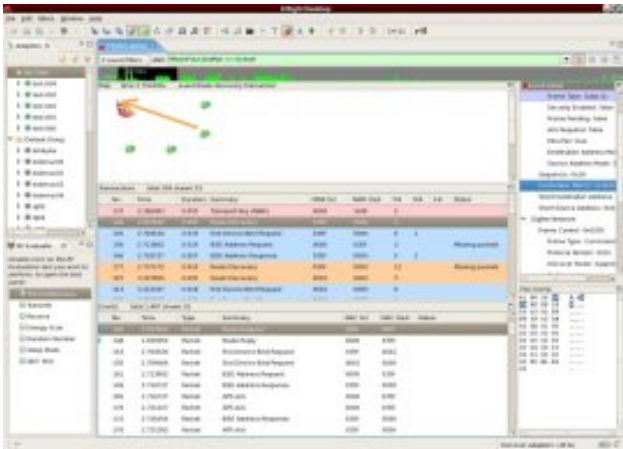


# Ember InSight Desktop

ZigBee Network Development and Debugging Tool

Tools

## Fact Sheet



Combines the extensibility of industry-standard Eclipse with Ember's expertise in building reliable, secure, easy-to-use embedded wireless networks.

The InSight Development Environment enables customers and OEMs to accelerate the creation of Ember-enabled system software and applications. The extensive tools have been specifically designed to work with the next generation chips and software products from Ember, including the EM250 ZigBee on a chip solution, the EM260, single chip network processor, and the EmberZNet second generation ZigBee protocol stack. Integrating the tools into one common user interface dramatically improves product development and debugging schedules, enabling a rapid time to market while minimizing development costs. Eclipse, the open sourced embedded software standard allows customers to easily extend InSight Desktop, the PC interface to the InSight Development Environment, by easily plugging in third party tools that are also based on Eclipse.

### Features

- Designed to work with EM250 & EM260
- Makes it easy to develop wireless, embedded networking applications
- Seamlessly integrate with target embedded hardware

### Network Debug

- Powerful Network Wide traffic visualization engine
- Effortless and non-intrusive packet capturing
- Time Synchronization between nodes
- Flexible Event Filtering
- Network Wide API Tracing
- Gives you the ability to rapidly download and execute your code to all nodes at once
- Analyzes both standard and customer specified protocols

### Product Description

The InSight Development Environment is an all-inclusive Development Suite including Networking Tool, Processor Development tool, Network Wide Visualization & Analysis Tool and Node Control Tool, bundled into a seamless, graphical environment.

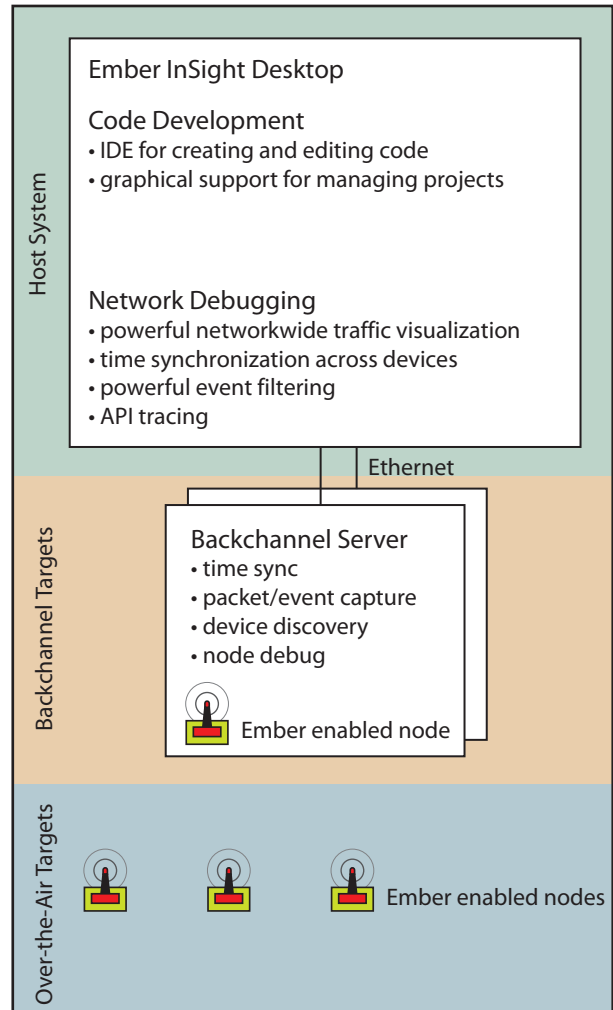
From within InSight Desktop, developers can seamlessly discover and connect to their target devices over a TCP/IP network using Ember's unrivaled Ethernet Backchannel Technology. From there they can easily control their application, upload firmware, collect debugging information including packet traces, API traces, and custom debug print statements, all across multiple devices simultaneously. Built-in protocol analysis and traffic visualization engines allow developers to correlate events occurring on their devices with network communication events, resulting in dramatic order-of-magnitude reductions in development and debugging times.

## Benefits

- Reduces development costs & time to market
- Visualize your network to optimize and enhance performance
- Standard platform speeds addition of new features
- Extensible platform allows easy integration of custom enhancements
- Applications are more reliable and robust
- Development learning curve is lower due to integrated environment

## System Requirements

- Target System Requirements
- Ember Development Kit
- Ethernet connection to the Host System
- Host System Requirement
- Intel Pentium-class processor
- 256 MB (or better) RAM
- 200 MB disk space
- Ethernet connection to the target system
- Windows XP Pro
- Java Runtime Environment 1.5 or greater



## About Ember

Ember develops wireless sensor and control network technologies that help make our living and working environments safer, smarter, more comfortable and energy efficient. Ember’s ZigBee-based semiconductors and software enable communication between devices embedded in a variety of building and home automation products. Ember is a lead member of the ZigBee Alliance, and its platform is the National Technical Systems’ (NTS) “Golden Suite” for 802.15.4/ZigBee interoperability testing.

### US Headquarters:

47 Farnsworth St.  
Boston, MA 02210  
USA  
+1 617 951 0200  
[www.ember.com](http://www.ember.com)

### European office:

Cambridge Science Park  
Unit 300, Milton Rd.  
Cambridge, CB4 0XL, UK  
+44 (0) 1223 423322  
[www.ember.com](http://www.ember.com)

### Asian office:

22/F, 3 Lockheart Rd.  
Wanchai, Hong Kong  
China  
852-2862 8075  
[www.ember.com](http://www.ember.com)



FACT-001-WKBNCH-0107  
Information contained in this document is subject to change without notice and is presented without express or implied warranty. Ember, EmberZNet and InSight are trademarks of Ember Corporation. All other trademarks are the property of their respective owners. Copyright 2007, Ember Corporation. All rights reserved.